

Access

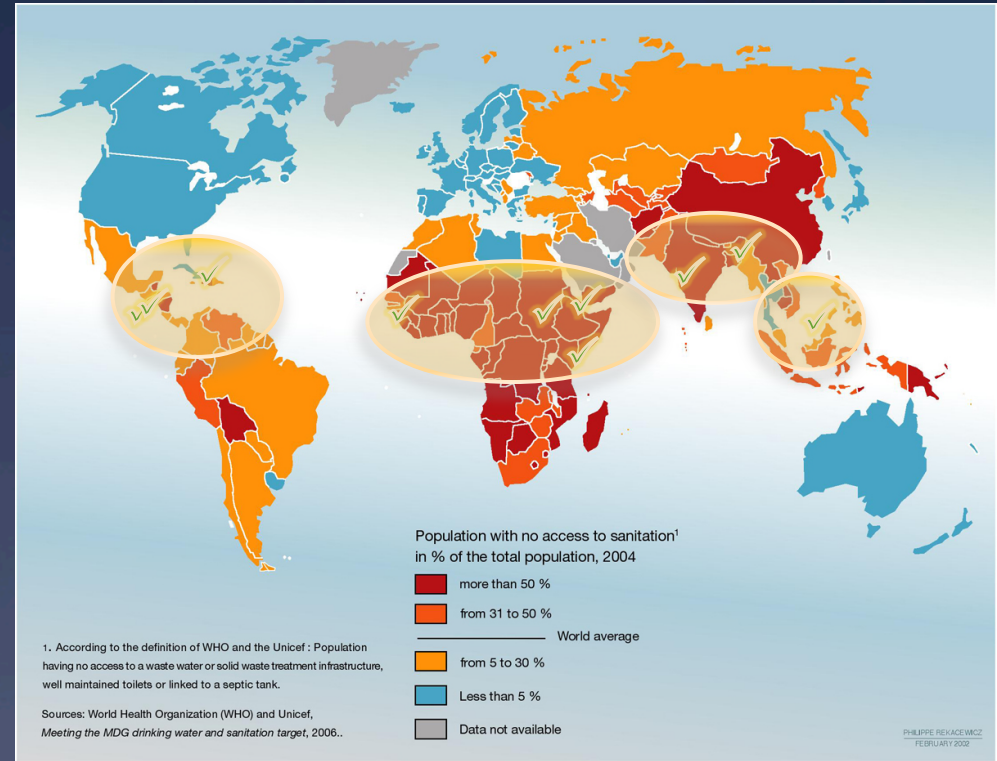
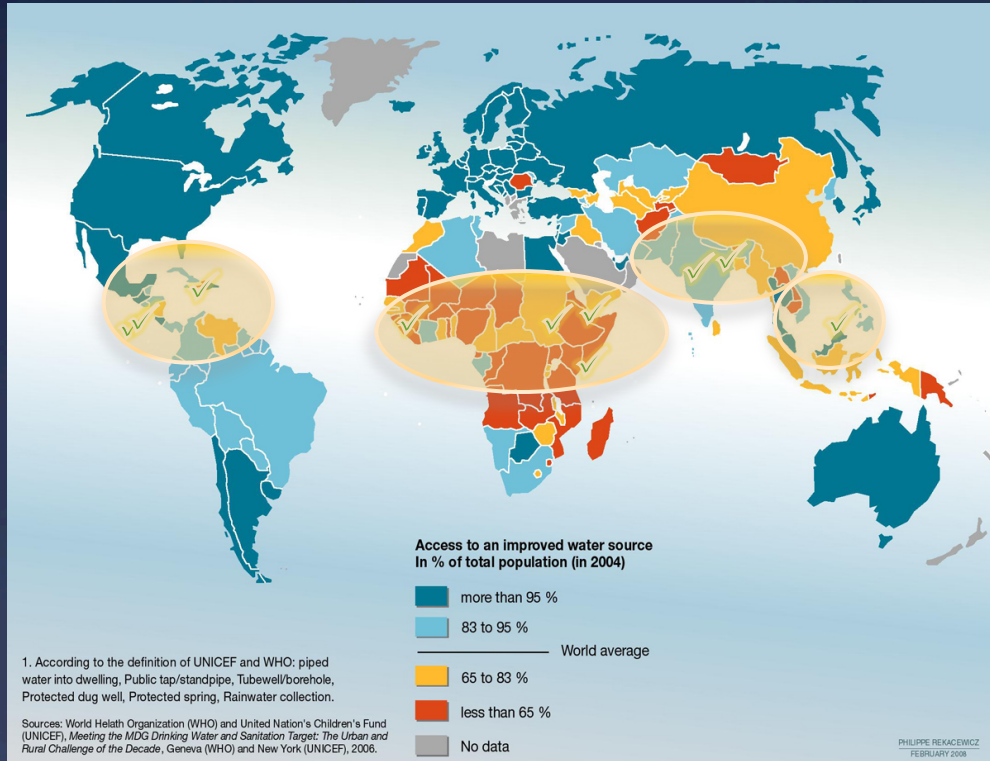
Quality

Sustainability

Scalability

Total Population Access to Improved Water Source

Total Population Access to Sanitation



Source: UN Environment Program, available at <http://www.unep.org/dewa/vitalwater/rubrique16.html>

The Issue



**Knowledge
Bank**

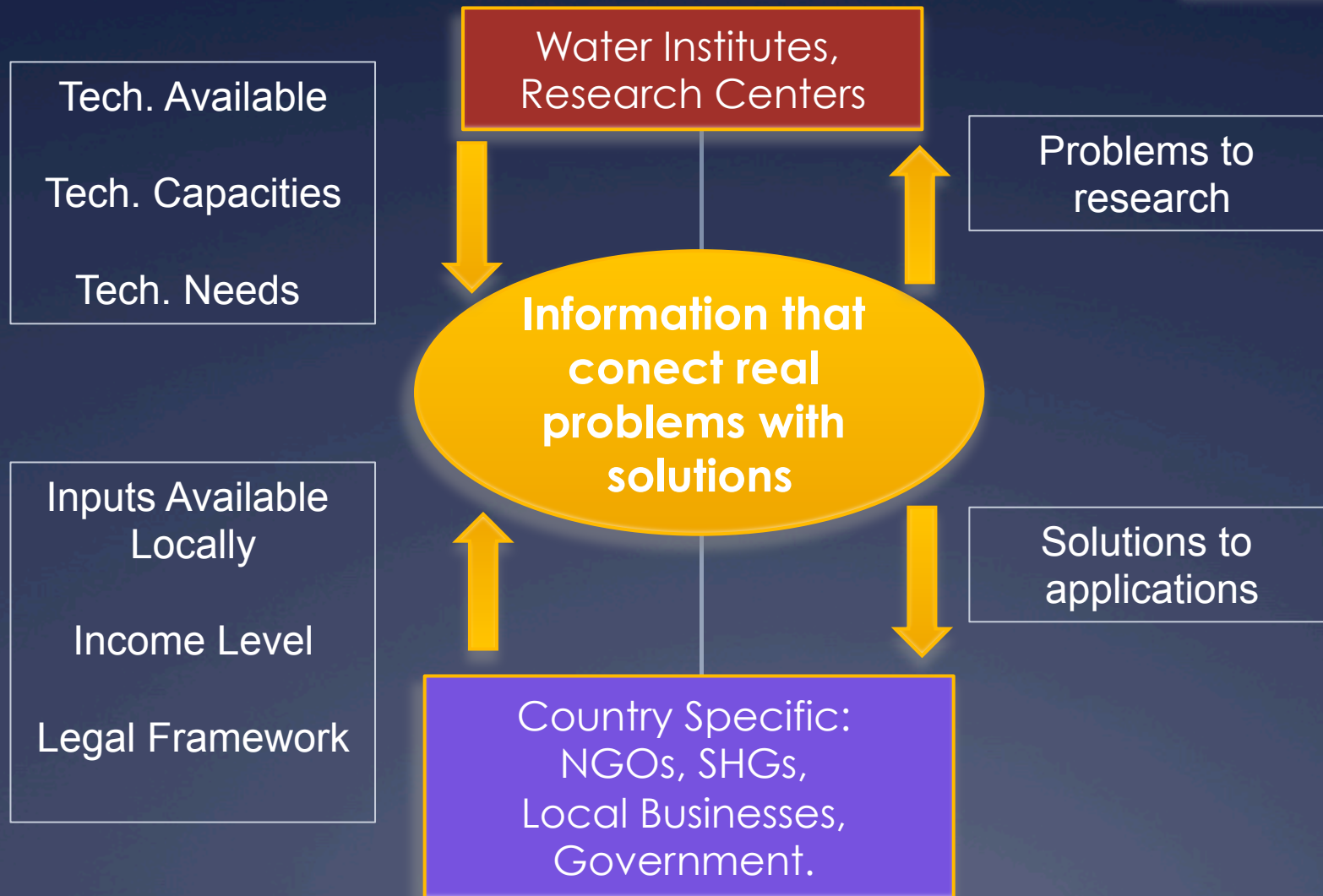


$$\frac{10 \text{ M}}{5 \text{ years}} = 2 \text{ M / yr}$$

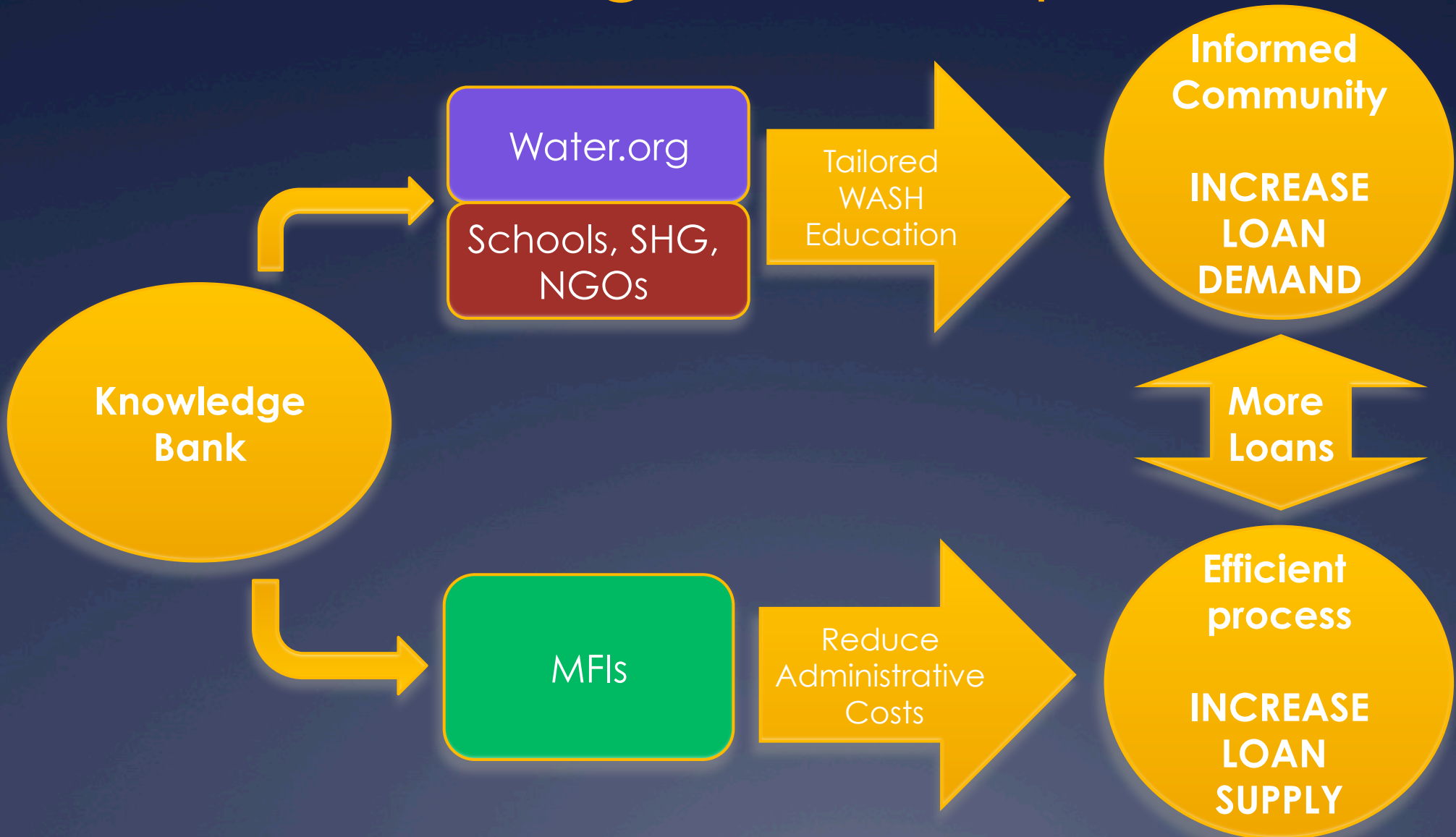
$$\frac{100 \text{ M}}{5 \text{ years}} = 20 \text{ M / yr}$$

Knowledge Bank

Open
Source –
Wiki Model

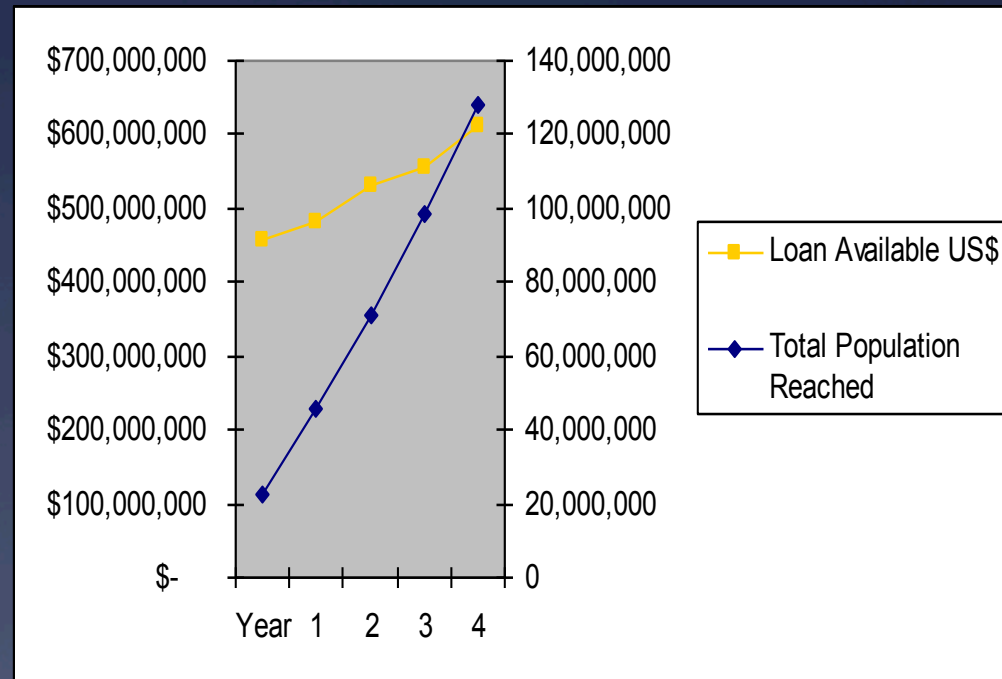


Knowledge Bank Impact



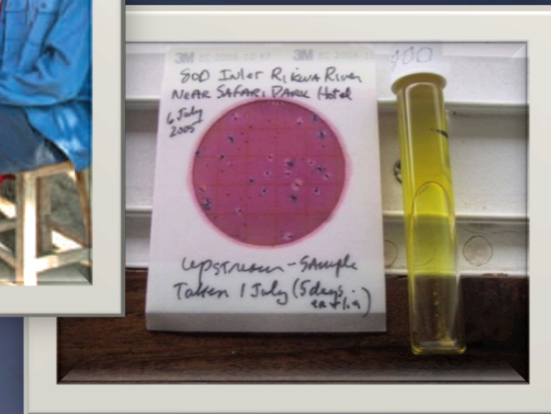
Improving MFI Efficiency

- * Average cost/loan reduction of **46%**
- * Efficiency increases by **50%** to 5.5% vs. banking industry average of 1-3%
- * Total loans made in 5 years **US \$2.6Bn**
- * Total amount of people served at end of 5 year plan = **128M**

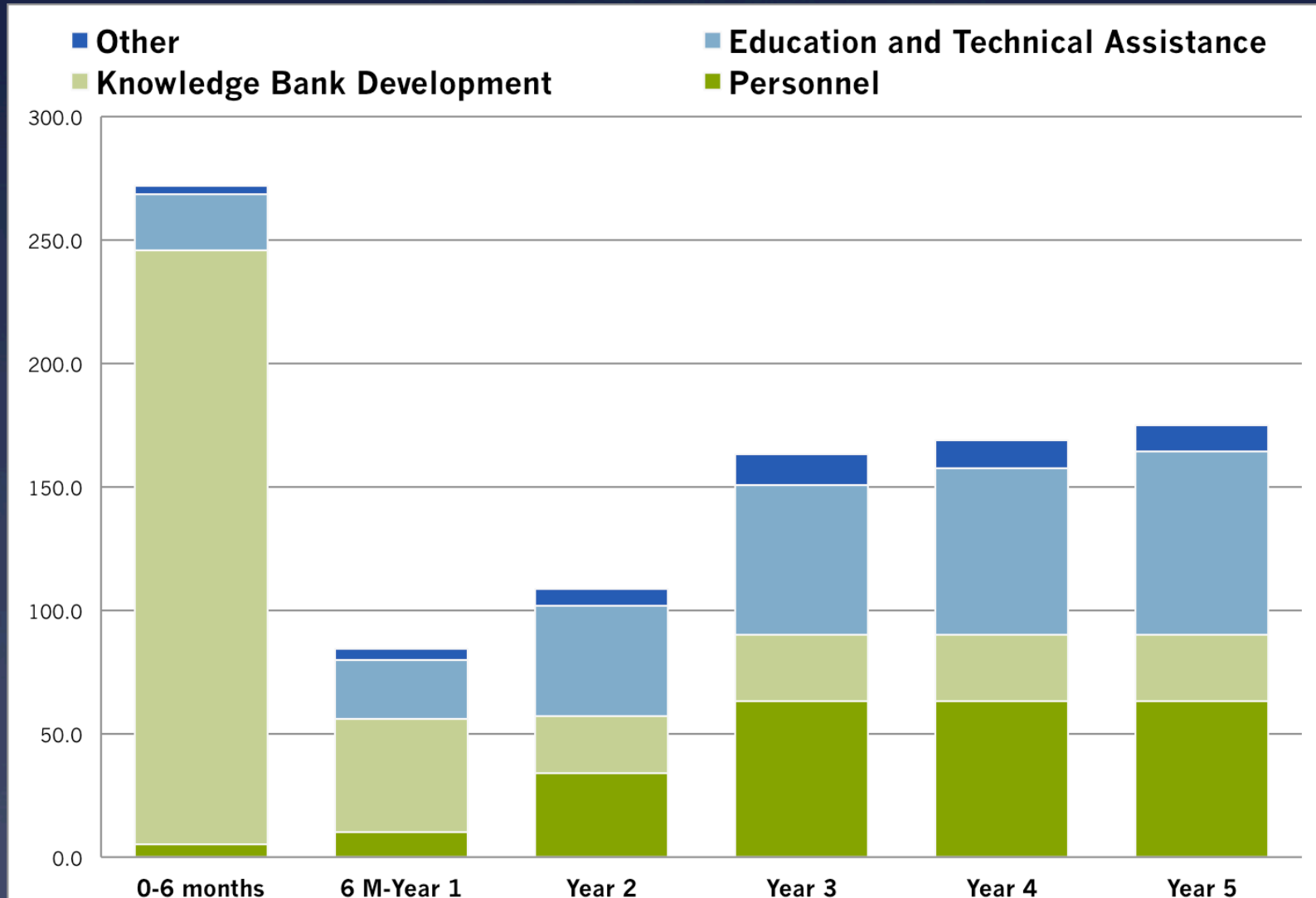


WASH Loans & Training

- * Standardize loans
 - * Community Loan:
 - * Community water or sanitation projects
 - * Individual Loan:
 - * Safe water business
 - * Technical assistance – maintenance & operation; financial management
- * Scale up



Timeline – Capital Deployment



S³ : Simple Sustainable Scalable

“Simplicity is the ultimate sophistication.”

Model Foundations



SIMPLE

- Local solutions to local issues

SUSTAINABLE

- Local project with local buy-in

SCALABLE

- Exportable to other areas



*...and
celebrity
endorsement!*